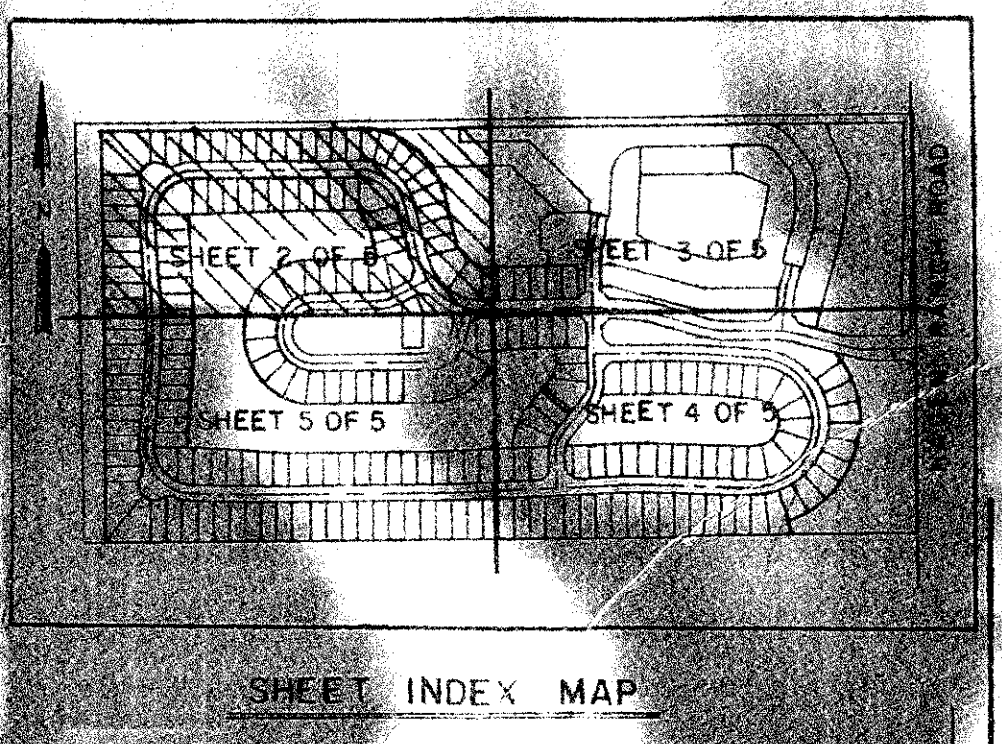
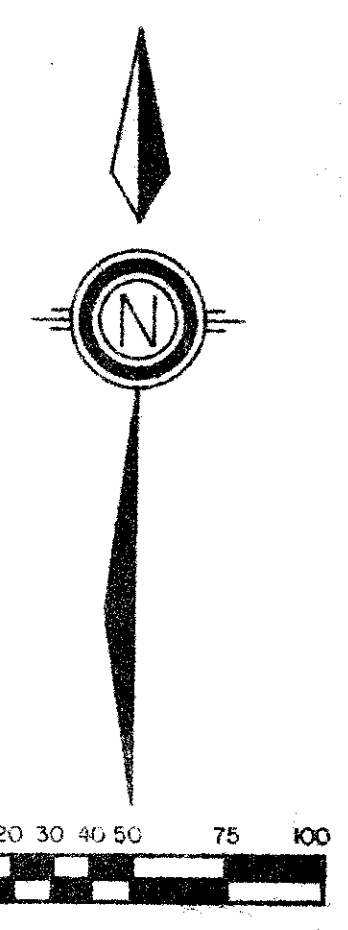


PINE RIDGE AT DELRAY BEACH
 BEING A REPLAT OF A PORION OF
 PALM BEACH FARMS COMPANY PLAT NO. 1
 SITUATE IN SECTION 9, TOWNSHIP 46 SOUTH, RANGE 42 EAST
 PALM BEACH COUNTY, FLORIDA
 AUGUST, 1987

SHEET 2 OF 5



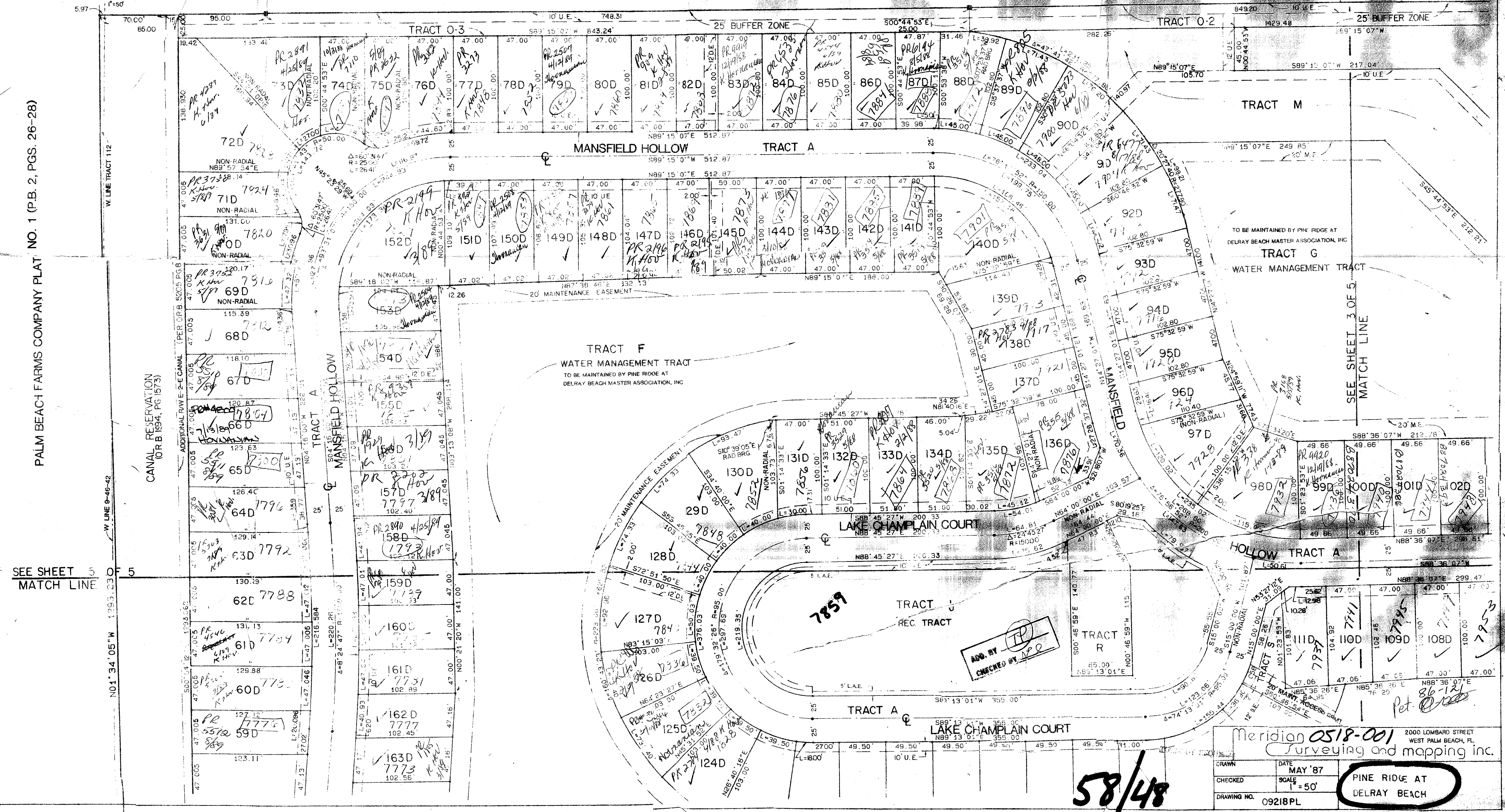
STATE OF FLORIDA
 COUNTY OF PALM BEACH
 THIS PLAT WAS FILED FOR RECORD THIS DAY OF AUGUST, 1987 AND DULY ENTERED IN PLAT BOOK AND BY JOHN B. DUNKLE, CLERK.



PALM BEACH FARMS COMPANY PLAT NO. 1
 (PLAT BOOK 2, PGS. 26-28)

PALM BEACH FARMS COMPANY PLAT NO. 1 (P.B. 2, PGS. 26-28)

TAX 459
 9/16/42
 Pine Ridge of Delray Beach
 58 B
 51
 200A
 FS
 33446
 PUD
 PB to main I
 11/78



SEE SHEET 5 OF 5
 MATCH LINE

SEE SHEET 3 OF 5
 MATCH LINE

ADD. BY
 CHECKED BY

Meridian 0518-001
 Surveying and mapping inc.
 DRAWN DATE MAY '87
 CHECKED SCALE = 50'
 DRAWING NO. 09218PL
 PINE RIDGE AT DELRAY BEACH

58/48